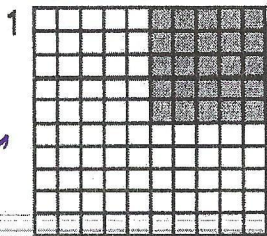


Why Was Cinderella Such a Poor Soccer Player?

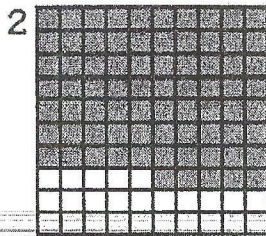
For each exercise, write a percent for the part that is shaded. Find your answer in the Code Key below. Write the letter for that answer in the box containing the number of the exercise.

| | | | | | | | | | | | | | |
|----|-----|-----|-----|-----|--------------------|-----|-----|--------------------|-----|-----|-----|-----|------|
| 1% | 10% | 20% | 25% | 30% | 33 $\frac{1}{3}$ % | 40% | 50% | 66 $\frac{2}{3}$ % | 70% | 75% | 80% | 90% | 100% |
| U | W | I | A | E | H | N | P | M | O | C | K | S | R |

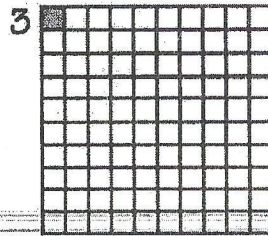


25 out of 100

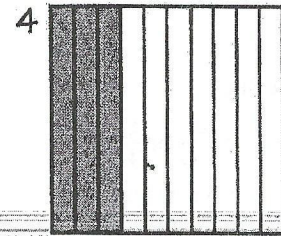
25%



85 out of 100



1 out of 100



3 out of 10 (How many out of 100?)



1 out of 5 (How many out of 100?)



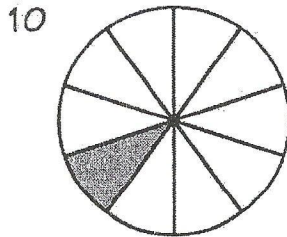
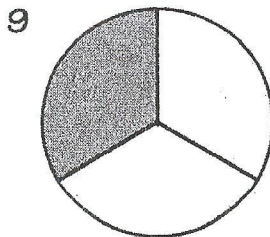
7 out of 10 (How many out of 100?)



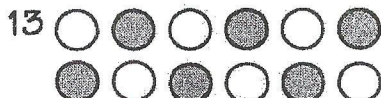
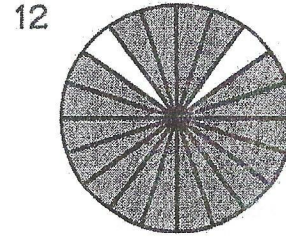
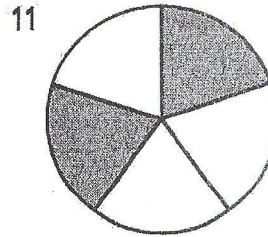
2 out of 8 (How many out of 100?)



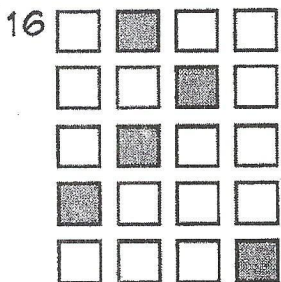
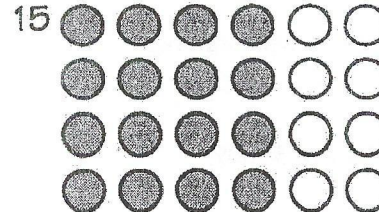
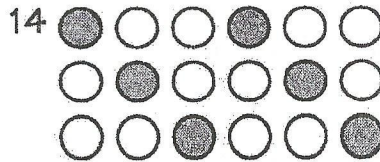
1 out of 1 (How many out of 100?)



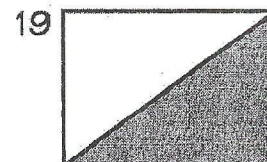
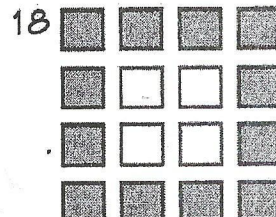
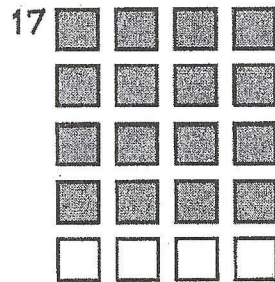
1 out of 10 (How many out of 100?)



6 out of 12 (How many out of 100?)



5 out of 20 (How many out of 100?)



| | | | | | | | | | | | | | | | | | | |
|---|---|---|----|---|----|---|----|----|---|----|---|----|---|----|----|----|---|----|
| 9 | 4 | 8 | 18 | 6 | 16 | 2 | 14 | 10 | 7 | 12 | A | 19 | 3 | 15 | 13 | 17 | 5 | 11 |
|---|---|---|----|---|----|---|----|----|---|----|---|----|---|----|----|----|---|----|

Lesson 1 Reteach

Percent of a Number

To find the percent of a number, you can write the percent as a fraction and then multiply or write the percent as a decimal and then multiply.

Example 1

Find 25% of 80.

$$25\% = \frac{25}{100} \text{ or } \frac{1}{4}$$

$$\frac{1}{4} \text{ of } 80 = \frac{1}{4} \times 80 \text{ or } 20$$

So, 25% of 80 is 20.

Write 25% as a fraction, and reduce to lowest terms.

Multiply.

Example 2

What number is 15% of 200?

$$15\% \text{ of } 200 = 15\% \times 200$$

$$= 0.15 \times 200$$

$$= 30$$

So, 15% of 200 is 30.

Write a multiplication expression.

Write 15% as a decimal.

Multiply.

Exercises

Find each number.

- Find 20% of 50.
- What is 55% of \$400?
- 5% of 1,500 is what number?
- Find 190% of 20.
- What is 24% of \$500?
- 8% of \$300 is how much?
- What is 12.5% of 60?
- Find 0.2% of 40.
- Find 3% of \$800.
- What is 0.5% of 180?
- 0.25% of 42 is what number?
- What is 0.02% of 280?