

# Independent Practice

Go online for Step-by-Step Solutions



PG 219

**Subtract.** (Examples 1–4)

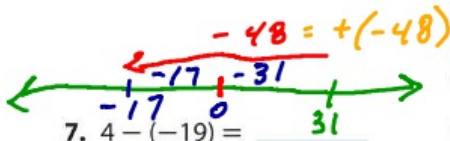
1.  $0 - 10 = -10$

$$0 + (-10) = -10$$



4.  $31 - 48 =$

$$31 + (-48) = -17$$



7.  $4 - (-19) =$

$$4 + (19) = 23$$

$$-(-19) = +19$$

Evaluate each expression if  $f = -6$ ,  $g = 7$ , and  $h = 9$ . (Examples 5 and 6)

10.  $g - 7 =$

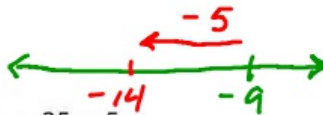
11.  $-h - (-9) =$

12.  $f - g =$

## ADD THE OPPOSITE

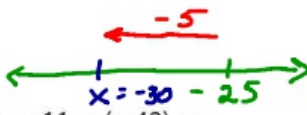
2.  $-9 - 5 = -14$

$$-9 + (-5) = -14$$

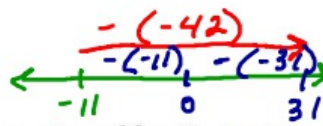


5.  $-25 - 5 =$

$$-25 + (-5) = -30$$



8.  $-11 - (-42) =$



3.  $-4 - 8 =$

6.  $-44 - 41 =$

9.  $52 - (-52) =$

**Use Math Tools** Use the information below. (Example 7)

State	Alabama	California	Florida	Louisiana	New Mexico
Lowest Elevation (ft)	0	-282	0	-8	2,842
Highest Elevation (ft)	2,407	14,494	345	535	13,161

- What is the difference between the highest elevation in Alabama and the lowest elevation in Louisiana? \_\_\_\_\_
- Find the difference between the lowest elevation in New Mexico and the lowest elevation in California. \_\_\_\_\_
- Find the difference between the highest elevation in Florida and the lowest elevation in California. \_\_\_\_\_
- What is the difference between the lowest elevation in Alabama and the lowest elevation in Louisiana? \_\_\_\_\_