

Lesson 8 Skills Practice

Factor Linear Expressions

Factor each expression. If the expression cannot be factored, write *cannot be factored*.

1. $17x + 34$ **$17(x + 2)$**

2. $10x + 25$ **$5(2x + 5)$**



5. $38x - 12$ **$2(19x - 6)$**

6. $28x + 15$ **cannot be factored**



9. $26x - 5$ **cannot be factored**

10. $48x + 56$ **$8(6x + 7)$**



13. $7x + 35$ **$7(x + 5)$**

14. $7x + 17$ **cannot be factored**

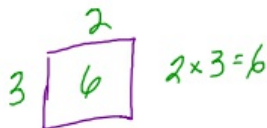
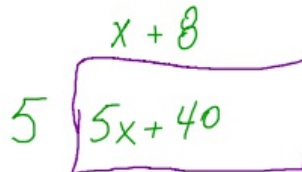
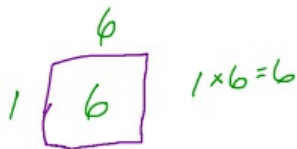


17. $8x + 15$ **cannot be factored**

18. $18x - 12$ **$6(3x - 2)$**



21. The area of a rectangular sandbox is $(5x + 40)$ feet. Factor $5x + 40$ to find possible dimensions of the sandbox. **$5(x + 8)$ ft**



9. $26x - 5$
 $\begin{matrix} \textcircled{1} & \wedge & \textcircled{1} \\ 26 & & 5 \\ \textcircled{2} & & \textcircled{1} \\ 2 & & 13 \end{matrix}$
CANNOT BE FACTORED

$\begin{matrix} 4 \\ \wedge \\ 2 \cdot 2 \\ \wedge \\ 1 \cdot 2 \end{matrix}$ $\begin{matrix} 4 \\ \wedge \\ 1 \cdot 4 \\ \wedge \\ 2 \cdot 2 \end{matrix}$

$48 = 4 \cdot 12$

$48 = 2 \cdot 2 \cdot 3 \cdot 4$

$48 = \underset{\uparrow}{2} \cdot \underset{\uparrow}{2} \cdot \underset{\uparrow}{2} \cdot \textcircled{2} \cdot \textcircled{3}$

$56 = 8 \cdot 7$

$56 = 4 \cdot 2 \cdot 7$

$56 = \underset{\uparrow}{2} \cdot \underset{\uparrow}{2} \cdot \underset{\uparrow}{2} \cdot \textcircled{7}$

Copyright © The McGraw-Hill Companies, Inc. Permission is granted to reproduce for classroom use.